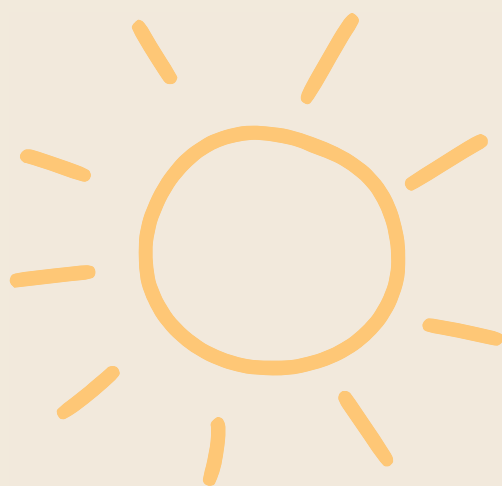


PACKAGES AND PRICING INFORMATION



eat chat play



WEANING PACKAGES

PLAN PACKAGE

£150

Get your weaning journey off to a great start with this 1 hour training and support session.

Offered online at a time convenient for you.

Covers everything you need to know from recognizing if your baby is ready to all the equipment you will need.

.....

FOLLOW UP PACKAGE

£400

Everything offered in the plan package.

Bespoke weaning guide to help you navigate the first month of weaning.

2 weeks of daily email follow up to get your journey off to a great start.

.....

TROUBLESHOOT PACKAGE

£80/
HOUR

Designed for families that have started their weaning journey but run into some difficulty.

1 hour online/ telephone call to discuss your concerns and issues.

Follow up email with recommendations and next steps.

Please note that this package is only available for specific weaning concerns.

.....

WEANING WORKSHOPS

Host a weaning workshop from the comfort of your own home!

Workshops are designed to help small groups learn everything they need to know about getting started on their weaning journey.

Price dependant on number attending



eat chat play

DYSPHAGIA SUPPORT PACKAGES

INITIAL ASSESSMENT

£270

Comprehensive case history
1:1 face to face or online assessment
Written report and feeding plan.

REVIEW SESSION

£90/
HOUR

Follow up support following and assessment.

CLINICAL SUPERVISION

£60/
HOUR

Online paediatric dysphagia clinical supervision for professionals.

*Can take place at home, in nursery or school.
School/ nursery day rate packages are also available- please
contact us for further details.
Mileage is charged at .45p per mile for all face to face visits.*

FUSSY EATING SUPPORT PACKAGES

ASSESSMENT WITH REPORT

£350
FACE TO
FACE

£300
ONLINE

Completion of a pre assessment questionnaire & food diary
In person or online assessment.
Detailed report completed.

.....

ASSESSMENT WITHOUT REPORT

£310
FACE TO
FACE

£270
ONLINE

Completion of a Pre assessment questionnaire & food diary
In person or online assessment.
Summary and recommendations completed.

.....

THERAPY SESSIONS

£140
/ HOUR NO
FOOD
INCLUDED

£170
/ HOUR FOOD
INCLUDED

1:1 face to face therapy.
Assessment is required before therapy can take place.
If you have had an assessment elsewhere, we can provide
follow up therapy as long as you provide us with a copy of
the report.
Online therapy is currently not available.

.....

*Can take place at home, in nursery or school.
School/ nursery day rate packages are also available- please
contact us for further details.
Mileage is charged at .45p per mile for all face to face visits.*

COMMUNICATION PACKAGES

ASSESSMENT WITH REPORT

£200

An initial assessment with a detailed report plus comprehensive targets and strategies

.....

ASSESSMENT WITH TARGETS AND STRATEGIES

£160

An initial assessment without a report
Comprehensive targets and strategies included

.....

THERAPY SESSIONS

£90/
HOUR

1:1 face to face therapy.
Assessment is required before therapy can take place.
If you have had an assessment elsewhere, we can provide follow up therapy as long as you provide us with a copy of the report.

Online assessment/ therapy is also available on a case by case basis- please contact us for more information.

.....

*Can take place at home, in nursery or school.
School/ nursery day rate packages are also available- please contact us for further details.
Mileage is charged at .45p per mile for all face to face visits.*

TRAINING/ CONSULTANCY PACKAGES

Bespoke training packages are available to parents/ carers/ education staff/ professionals on a range of topics including:

Fussy eating
Paediatric dysphagia
Weaning
Early communication

Brand consultancy is also available

Contact us today to find out more information:

chelsea@eatchatplay.com
